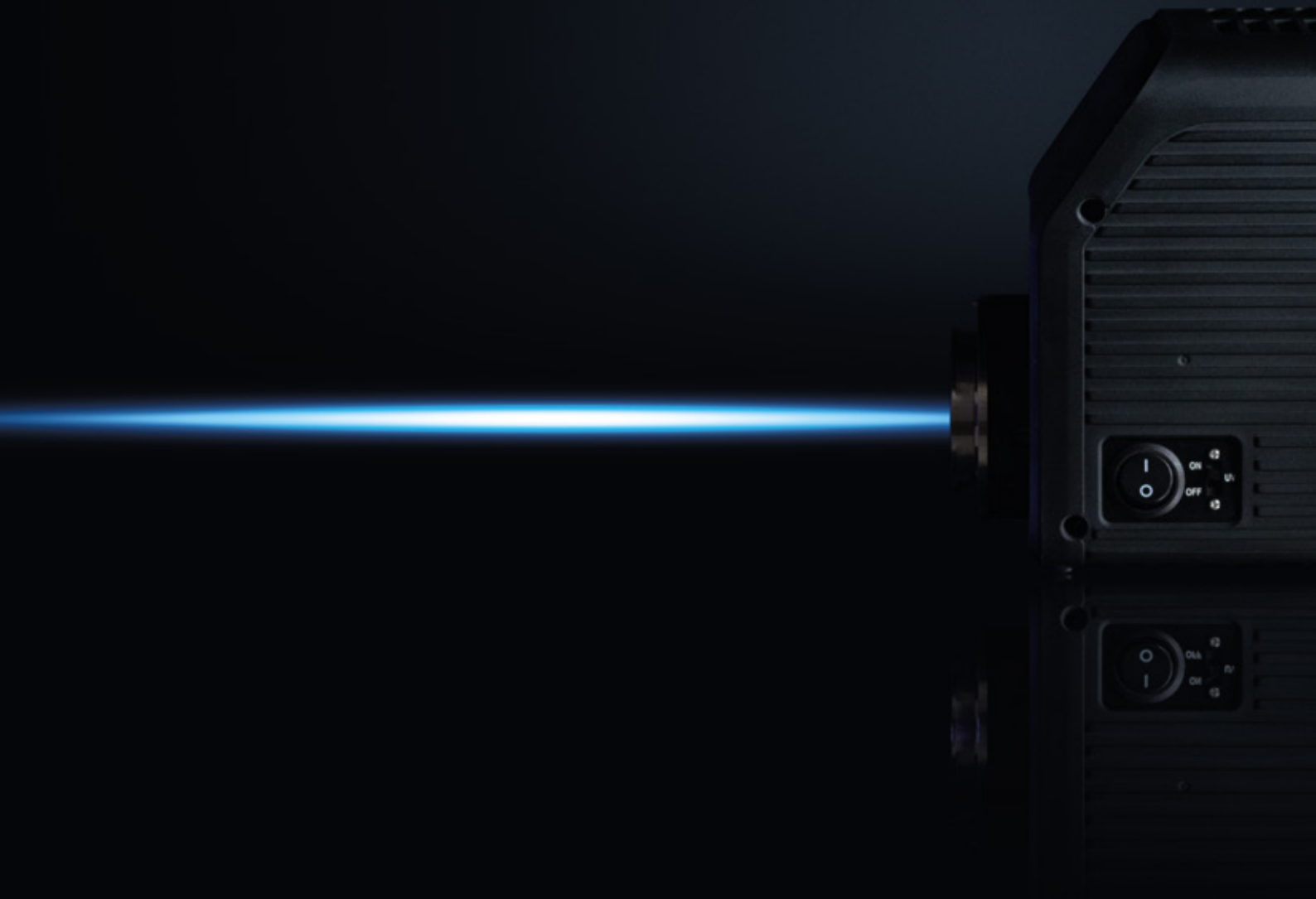


Motic®

MORE THAN MICROSCOPY

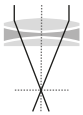
LUMOS

THE POWER OF LIGHT



LUMOS

MAKING VISIBLE THE INVISIBLE



Highly corrected optical path design



Instant on/off, ready to use at the flip of a switch



20.000hrs

Lifespan of up to 20,000 hours, versus only 200 hours offered by mercury arc lamps



Avoids stray light interference, avoiding mistakes when interpreting images



Zero heat damage to samples from the light emitted



Individual control of each LED channel



No danger to users from toxic mercury vapor



Broad spectrum spread

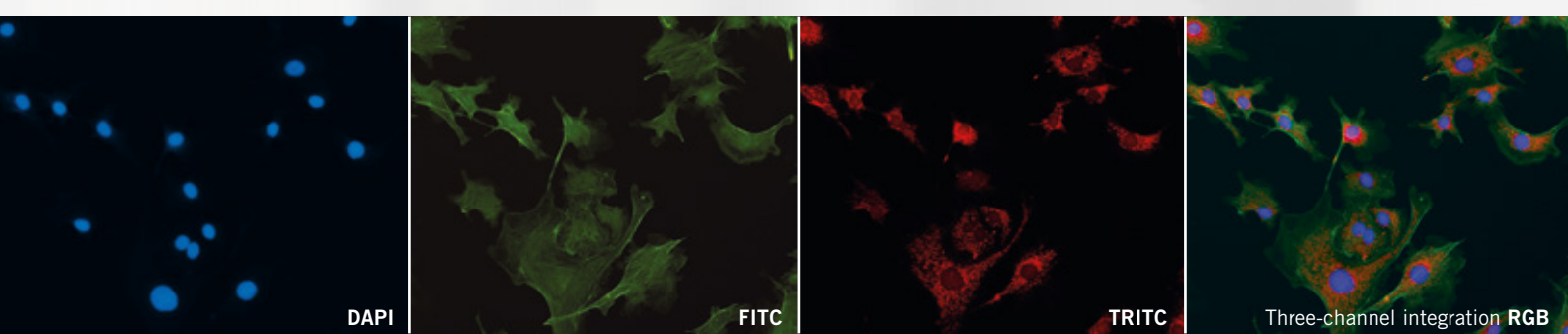


TECHNICAL SPECIFICATIONS

Light Sources	High-power Colour LED (UV, B, G) x3
Channel	UV (peak @ 395nm), Blue (peak @ 460nm), Green (peak @ 540nm)
Output Power	UV (760mW), Blue (610mW), Green (530mW)
Estimated LED life span	20,000 hours or 8 years (Whichever comes first)
Speed of LED switching	Millisecond level
Environmental operating temperature	5 to 40 °C
Environmental operating pressure	75KPa to 106KPa
Control pad connection to system	Wireless
Connection to computer or/and microscope	USB interface (with PA53 BIO Series)
Power Requirements	130W (15 V/8.66 A) DC power supply included
Dimensions (L x W x H)	200mm x 108mm x 162mm
Weight	2.7kg

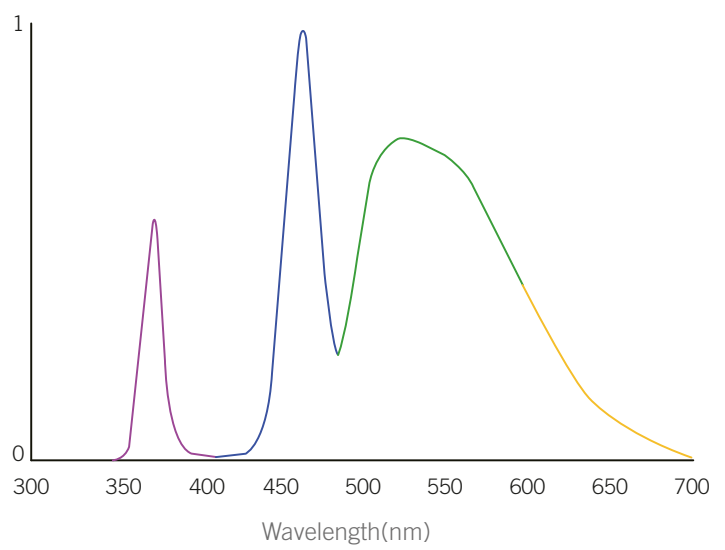
Do more with your Motic microscope setup with our cutting-edge fluorescence solution: Lumos. With this high-performance plug and play illuminator device, you will obtain stunning multi-channel images that can be seamlessly overlaid using our intuitive imaging software.

Featuring UV, blue and green colour LED channels, with ultra-accurate wavelengths and contrast provided by its black background, this accessory yields sharp images without the need for constant bulb changes or alignment.



MOTIC FLUORESCENCE IMAGING SOFTWARE

Our renowned software Motic Images Plus 3.0 becomes even more powerful with the user-friendly Motic Fluorescence Imaging Software plug-in*, developed for the challenge of multi-channel imaging and integration.



**This function is currently available only with PA53 BIO FS6*

PA53 BIO

The PA53 BIO series is an excellent choice for starting to work with fluorescence at an affordable price. When coupled with Lumos, its infinity-corrected optics will help you tackle all of your clinical diagnostics and research challenges.



PA53 BIO FLUORESCENCE ACCESSORIES

6-position coded fluorescence illuminator turret for PA53 BIO Series

CCIS® HPlan S-APO (Fluor) objectives

4X/0.13 (WD=17.3mm)
10X/0.30 (WD=11.7mm)
20X/0.50 (WD=2.2mm)
40X/0.75/S (WD=0.7mm)
100X/1.30/S-Oil (WD=0.1mm)

Standard fluorescence filter sets for PA53 BIO Series*

AT-DAPI/Hoechst/AlexaFluor 350
AT-EGFP/FITC/Cy2/AlexaFluor 488
AT-TRITC/Cy3/TagRFP/AlexaFluor
DAPI/Green/Orange Multi-Band FISH

**Other filter sets available upon request*

BA410E Pairing this instrument with Lumos makes for an outstanding fluorescence microscope with an impressive value for money. A device in a class of its own, it is suitable for both educational and clinical environments.

AE31E The AE31E inverted microscope is a must-have tool for analysing samples of living cells. When combined with Lumos, it will take your diagnostic and analytical microscopy to new heights of precision and thoroughness.



BA410E & AE31E FLUORESCENCE ACCESSORIES

Epi-fluorescence attachment with filter cassette for BA410E or AE31E Series

CCIS® Plan FLUOR objectives for BA410E

- 4X/0.13 (WD=17.3mm)
- 10X/0.30 (WD=11.7mm)
- 20X/0.50 (WD=2.2mm)
- 40X/0.75/S (WD=0.7mm)
- 100X/1.30/S-Oil (WD=0.1mm)

Standard fluorescence filter sets for BA410E & AE31E Series*

- DAPI/Hoechst/AlexaFluor 350 set
- EGFP/FITC/Cy2/AlexaFluor 488 set
- MB set
- TRITC/Cy3/TagRFP/AlexaFluor 546 set
- Texas Red/mCherry/AlexaFluor 594 set
- ECFP/Cerulean set
- Empty set

**Other filter sets available upon request*

Motic®

Canada | China | Germany | Spain | USA



Motic America

Motic Instruments (Canada)

130 - 4611 Viking Way, Richmond,
BC V6V 2K9 Canada
Tel: 1-877-977 4717 | Fax: 1-604-303 9043

Motic Instruments (USA)

6508 Tri-County Parkway, Schertz, TX 78154, USA
Tel: 1-210-590 9010

Motic Digital Pathology (USA)

600 California St, San Francisco, CA 94108, USA
Tel: 1-877-977 4717

Motic Europe

Motic Deutschland (Germany)

Charlotte-Bamberg-Str. 6, 35578 Wetzlar, Germany
Tel: 49-6441-210 010

Motic Europe (Spain)

C. Les Corts 12, Pol. Ind. Les Corts.
08349 Cabrera de Mar, Barcelona, Spain
Tel: 34 93 756 62 86

Motic Asia

Motic Headquarters (Hong Kong)

Unit 2002, L20, Tower Two, Enterprise Square Five,
38 Wang Chiu Road, Kowloon Bay, Kowloon
Tel: 852-2837 0888 | Fax: 852-2882 2792

Motic Xiamen (China)

4A-6, N°810 Fangshan Nan Road, XiangAn,
Xiamen, P.R. China.
Tel: 0592 559 9681 | Fax: 0592 559 9683

Design Change: The manufacturer reserves the right to make changes in instrument design in accordance with scientific and mechanical progress, without notice and without obligation.

*CCIS® is a trademark of Motic Incorporation Ltd. Motic Incorporation Limited Copyright © 2002-2022. All Rights Reserved.

Created and designed in Barcelona (Spain) by Motic Europe | September 2022

ISO 9001:2000, ISO 14001:2004 and ISO 13485 Certified.

EN | ES | FR | DE | IT | PT


www.moticeurope.com